

Bolle Restaurant / Agnelli Cooking Tools Showroom

Platek®

Bolle Restaurant / Agnelli Cooking Tools Showroom

Illuminate matter to enhance emotions

LOCATION: Bergamo - Italy

YEAR: 2019

ARCHITECT: Marco Acerbis

PROJECT: Bolle Restaurant / Agnelli Cooking Tools Showroom

COMMISSIONED BY: Bolle Restaurant /

Agnelli Cooking Tools Showroom

PHOTOGRAPHY: Marco Introini Photography





A project that seeks more than simply redevelop an industrial area, aiming instead to give life to a venue in which to enjoy quality experience linked to the world of haute cuisine: “Hence,

the creation of a multi-dimensional architectural project translated into a building whose shell and core exude sensations conveyed to visitors as emotions, surprise and desire for discovery”.



The minimalist Platek products were selected for this project in order to meet the design needs of enhancing shapes with discretion.

The façade features a hand-made decoration that brings to mind primordial elements like “fossils, melted metals and great earth movements”. The circular movements of

the plaster are combined with portholes of different diameters, making the façade unique in its kind. Target spotlights mounted on a pole enhance this focal light point of the building: a harmonious combination of easy use and aesthetic elegance capable of illuminating shapes and volumes in a versatile way.







The parking lot is enhanced by bollards like Team, which elegantly leverages ambient light, and Blend, whose design interacts with daylight creating shadows and visual softness, pleasing the eye even when turned off. Being capable of striking balance between sculptural form and lighting technology, the Blend bollard has also been installed at the entrance, where it provides

efficient service light and delivers pleasant aesthetic notes.

In the interior, the staircase, deliberately designed in the opposite direction to that of the entrance, is illuminated by Target spotlights. It is “a bold choice that forces visitors to take a few steps back, almost to reset the thought to focus on the next emotion”.

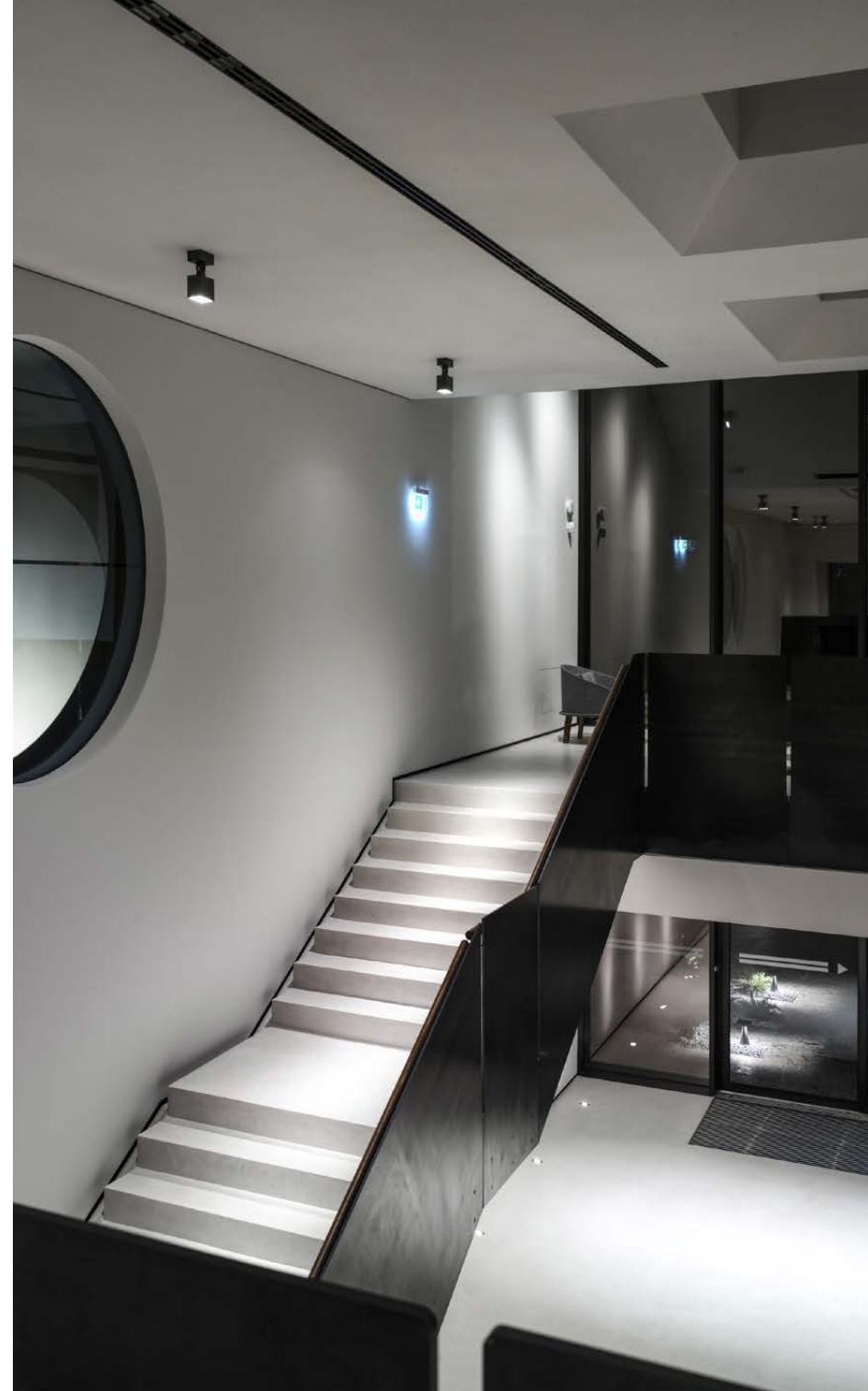


The reception area is illuminated by E2 ceiling recessed and Mini floor recessed lights; the restaurant features E4 recessed lights, whose discreet presence gives guests great visual comfort. The light effect engenders a welcoming ambiance that also enhances the shapes of the three giant circular Venetian stucco partition

walls.

Simple materials and neutral colours whose essence contributes to a result of great architectural impact: this is what architect Marco Acerbis has envisioned for Bolle Restaurant and the Agnelli Cooking Tools Showroom, in which “matter is transformed into emotions”.



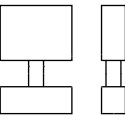






TECHNICAL SHEET

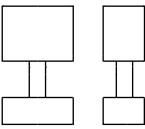
TARGET small
floodlight



indoor/outdoor

size
120x191x40

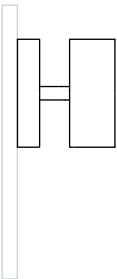
TARGET medium
floodlight



indoor/outdoor

size
120x209x70

TARGET large
floodlight



indoor/outdoor

size
220x209x70

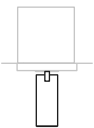
E2
ceiling recessed



indoor/outdoor

size
ø 30 mm

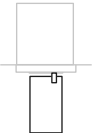
E2 plus



indoor/outdoor

size
h 85 mm
ø 35 mm

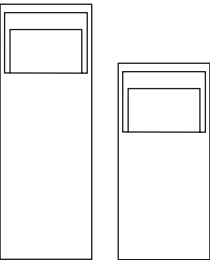
E4 plus



indoor/outdoor

size
h 112 mm
ø 65 mm

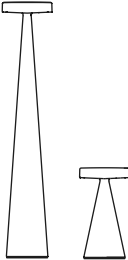
TEAM
bollard



indoor/outdoor

sizes
h 900 mm
h 600 mm

BLEND
bollard



indoor/outdoor

sizes
h 900 mm
h 300 mm

MINI
drive over



indoor/outdoor

size
Ø 152 mm

Platek Srl © Platek 2020

Registered Office:

Via Paderno, 19

Head Office: Via Marrocco, 4

25050—Rodengo Saiano (BS),

Italy

P.Iva 03320290178

C.F. 03007130176

T +39 030 68 18 201

F +39 030 68 16 567

marketing@platek.eu

www.platek.eu

Platek online

facebook.com/platek

twitter.com/platek

instagram.com/platek

youtube.com/platek

pinterest.it/platek

